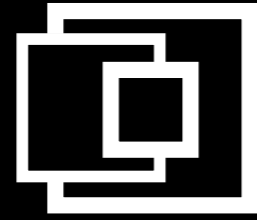


Osai Automation Systems



OSAI A.S. S.p.A. SB  
Via Cartiera, 4 - 10010 Parella (TO) - ITALY  
Tel: +39 0125 66.83.11  
sales@osai-as.com - www.osai-as.com

PMTH  
POWER MODULE TEST HANDLER

Up to 400 UPH



- Configurable
- Scalable
- Upgradable

HI-POT, STATIC, DYNAMIC TEST



Test station for AC (Dynamic) - DC (Static) test.  
Hard docking system to minimize the electrical stray parameters.

KEYPOINTS

- Suitable for:**  
AC/DC/Hi-POT test fixtures
- Supported test fixtures for:**  
DBC, Power module, high power discrete components
- Temperature control**  
Closed loop temperature control  
Accuracy  $\pm 2^{\circ}\text{C}$  (@175 $^{\circ}\text{C}$ )



CONFIGURABLE INPUT / OUTPUT



Input / output is fully configurable to accommodate the most used input output media.

KEYPOINTS

- Input output media:**  
Tray, blister, tape, tube, transport belt
- Loader/unloader**  
OSAI Standard module (NeoTray feeder) or custom
- In-line capability**  
SMEMA interface  
AGV Ready (open to robotization for material handling)
- Bin formats**  
Tray, blister, tape, tube, transport belt



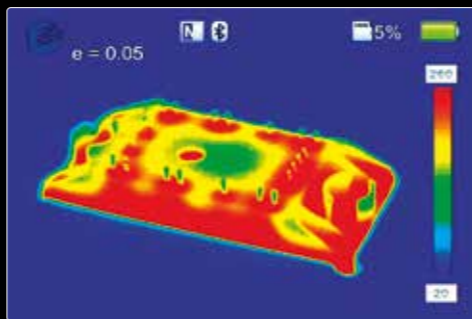
TEST AT TEMPERATURE



Automatic device conditioning at the desired test temperature.

KEYPOINTS

- Hot and Ambient temperature**  
Programmable Hot temperature up to 175 $^{\circ}\text{C}$   
Closed loop temperature control  
Accuracy  $\pm 2^{\circ}\text{C}$  (@175 $^{\circ}\text{C}$ )
- High reliability**  
Long life IR lamps
- Low soak time to optimize the UPH, also for high mass modules**  
40 sec from Ambient to 175 $^{\circ}\text{C}$  (on HPD package)  
Soak buffer Up to 12 Modules
- High speed cooler with forced air**



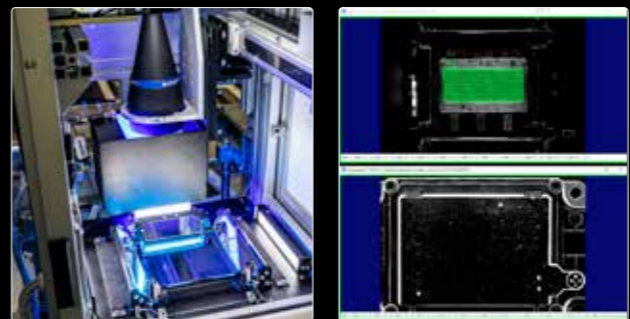
PIN CHECK, WEIGHT CHECK, OPTICAL INSPECTION



To perform optical inspection and/or weight check. The optical inspection verifies that the unit has no physical defects, including pin position and height. The weight check ensures that the module contains the expected SiGel quantity.

KEYPOINTS

- Suitable for:**  
Power modules, DBC-AMB, discretes
- Inspection capability**  
5S, 6S inspection, convexity check  
Pins and rivets presence, bent pins, damaged plastic case
- 3D Inspection capability**  
Laser profilometer for 3D checks on the package
- Weight check specification**  
Range: 0-500grams  
Accuracy: 1%  
Resolution: 0,01grams



LASER MARKING



The ultimate solution for fast and accurate plastic case marking, which allows a single unit traceability. Several Laser sources are available to mark any type of plastic case.

KEYPOINTS

- Laser marking sources**  
Green (532nm), IR (1.064nm), CO<sub>2</sub> (10.600nm)
- Particle free**  
Specific extraction hoses, active vacuum exhaust system
- Marking capability**  
One side or both
- Marking types and checks**  
Strings, 1D, 2D codes, logos  
Grading and quality (OCV)
- Tailored DB communication**  
For traceability

