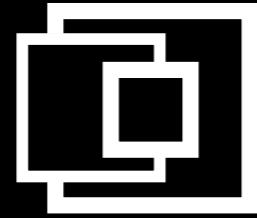


Osai Automation Systems



OSAI A.S. S.p.A. SB
Via Cartiera, 4 - 10010 Parella (TO) - ITALY
Tel: +39 0125 66.83.11
sales@osai-as.com - www.osai-as.com



Automatic Line Example

Modular • Configurable • Scalable • Reusable

SOLUTIONS FOR POWER DEVICES PRODUCTION

PICK & PLACE



This equipment is used to assemble different parts of power modules such as: dice, lead frame, preform and plastic case.

KEYPOINTS

Suitable for:
Dice, Preform, AMB, Lead Frame, Plastic Case

Configurable Input Media
Tray, Blister, Tape & Reel, Bulk, Film Frame

High Accuracy
±5µm

High Speed
Up to 1sec/cycle



PIN INSERTION



This equipment is used to place the pins on the substrate. It works for both wired (inserted) and coil pins (punched and soldered in the next phase).

KEYPOINTS

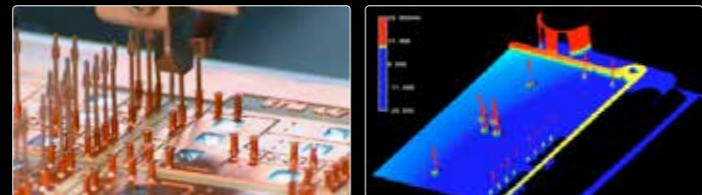
Suitable for:
Wired Pins and Coil Pins

High Accuracy
±5µm

Pin Insertion Check
Height ±50µm
Force Control Up to 500N

High Speed
Up to 2pins/s

Optical Features
Single Pin Optical Alignment
3D Scan Check



DISPENSING / VACUUM POTTING



This equipment can be configured with: glue, flux jet dispenser (with integrated optical check and UV curing) or SilGel dispenser (two components volumetric dispenser) with vacuum potting chamber.

KEYPOINTS

Suitable for:
Ultra Fast Jet Dispensing / Two Components Volumetric Dispensing

Design for:
Flux, Glue and SilGel

High Accuracy
±5µm

Optical Features
UV Lighting Vision System
Long Life LED UV Curing

High Speed
Up to 300PH

Additional Features
Vacuum Potting Chamber
Weight Check



SOLDERING / WELDING



According to the connection method, the equipment can be configured to perform Vacuum induction soldering or ultrasonic welding.

KEYPOINTS

Suitable for:
Lead Frame Welding / Pin Soldering

High Accuracy
±5µm

Top notch technology
Linear or Torsional Ultrasonic Welding
Patented Vacuum Induction Soldering

Optical Features
Full Optical Alignment
Quality Optical Inspection



LASER MARKING



The equipment is used to mark every single leadframe / AMB and device, to allow each single unit traceability. The green Laser source is the ultimate solution for a fast and accurate marking on copper, silver, ceramic substrate and plastic case.

KEYPOINTS

LASER
Green

Fiducial check
For accurate marking position

100% data and grading check
On 1D/2D code

Optical check
For component presence/absence

Full library
(2D code, Bar code, QR code and others)

Tailored DB communication
For traceability

