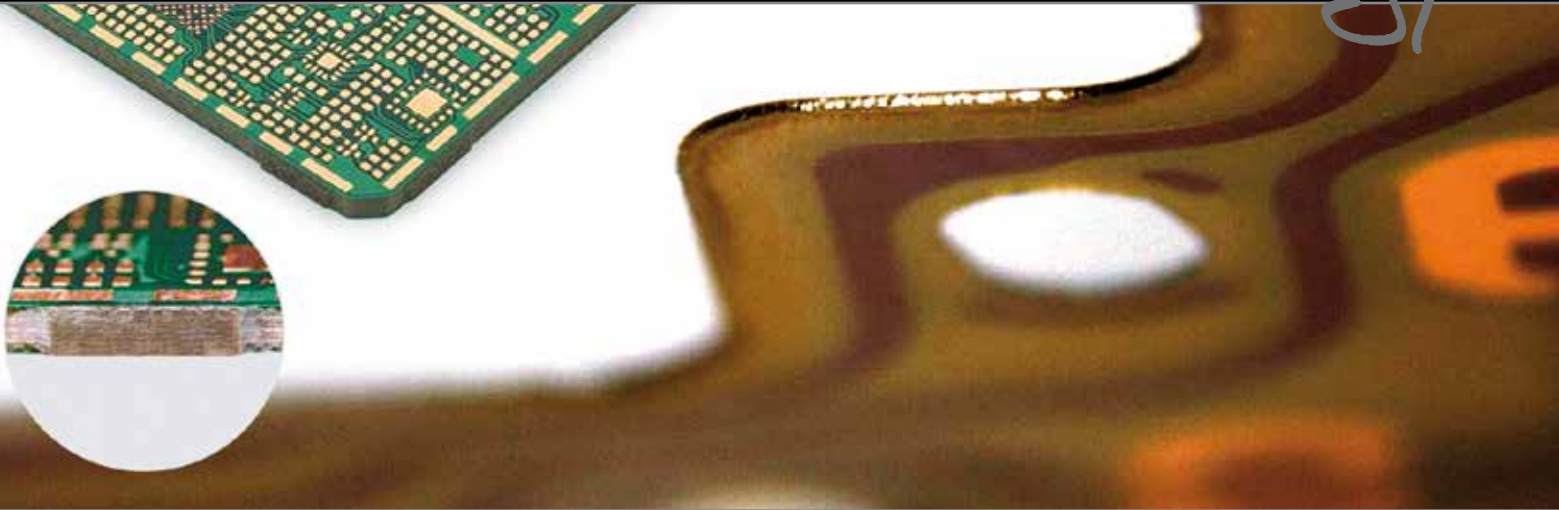


where ideas become technology



NEOCUT
easy

Laser Depaneling

(XV, UV, CO₂)

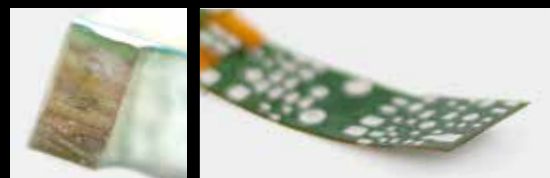
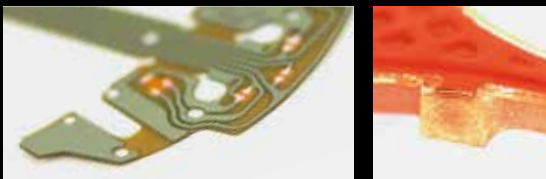
NeoCut Easy performs very accurate cutting operations, without mechanical stresses on components.

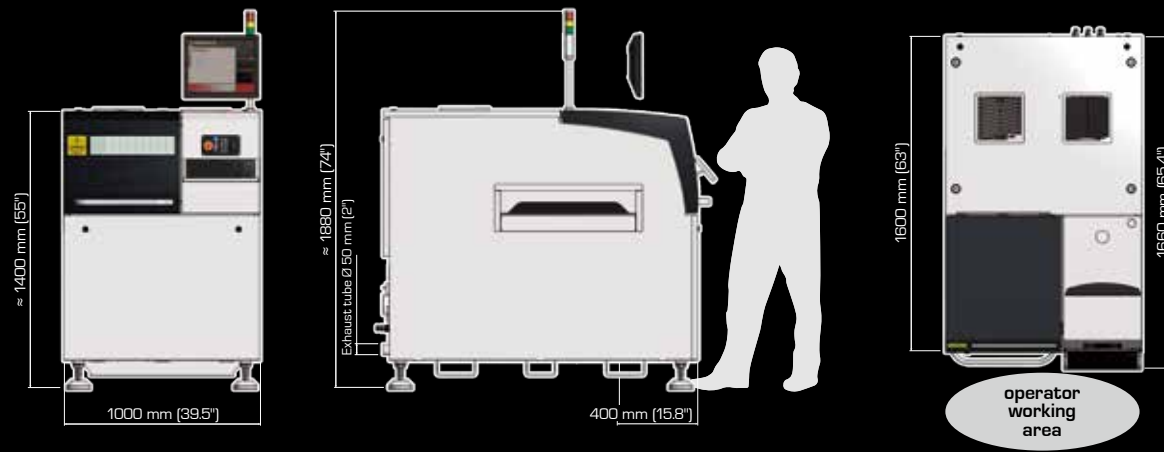
As well as supplying an exceptional solution in depaneling rigid and flexible PCBs, the NeoCut Easy system is also able to mark PCBs and plastic surfaces, with three different types of Laser, depending on customer need (UV - XV - CO₂).

Easy programming, also editable off-line, enables the NeoCut Easy to be used both for prototyping and mass production.

Main characteristics:

- Fiducial check for accurate marking position
- Optical check for component presence/absence
- PCB polarization check
- Automatic parameter adjustment in production
- Automatic width adjustment
- Full library (2D code, Bar code, QR code and others)
- Tailored DB communication for traceability
- Remote control
- Datalog available for fast diagnostic

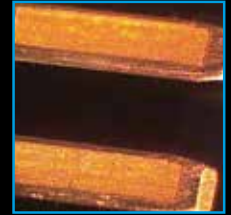




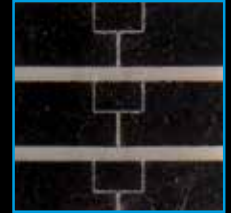
Plastic marking



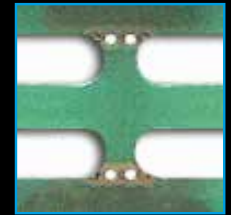
Trimming



Deflashing



Scribing



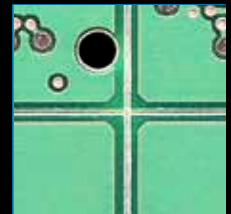
2mm Stamp



YAG on copper



CO₂ color change on solder resist



V-Cut

MACHINE CONFIGURATION

Transport (Height)	SMEMA compliant
Max. transport (Width)	480 mm (19") with automatic width adjustment
Interface	SMEMA
Transfer direction	From left to right (optional from right to left or pass-back)
Operating side - Fixed rail	Front of the machine

PANEL DIMENSIONS

Panel (Length)	70 mm to 480 mm (2.8" to 19")
Panel (Width)	50 mm to 480 mm (2" to 19")
Panel (Weight)	Up to 3 kg (6,6 lbs)
Transport PCB	3 mm carrying edge flat belt
Panel thickness	0.5 mm to 3.5 mm (19,7 mils to 138 mils)
Panel clearance	Up 66 mm - Down 40 mm
Marking area (Length - Width)	Up to 480 mm (Up to 19")

INSTALLATION REQUIREMENTS

Power supply	CE 230V	ETL 208/240/277/440/480/575V
Power supply system	CE 1P+N+PE - 50/60 Hz, +/-10%	ETL 2Ph+GND 3 Wire - 50/60 Hz, +/-10%
Power consumption	Typical 1 kW (+ 0,2 up to 0,8 kW depending on Laser)	
Air pressure	6 bar (87 p.s.i.)	
Average consumption	<10 NI/min (2,64 gpm)	

MACHINE DESCRIPTION

Length x Width x Height	1000 mm x 1660 mm x 1880 mm (39.5" x 65.4" x 74")
Codes	Data Matrix ECC200, Code 39, Code 128, 2/5 Interleaved, QR code
Repeatability	+/- 50 µm (1,96 mils)
Accuracy	+/- 100 µm (3,93 mils)
Track speed	24 m/min
Axis speed (X - Y)	48 m/min
Weight	Approx. 800 kg (1763 lbs)
Color	RAL 9018, RAL 7016
Noise level	< 70 dB

STANDARD FEATURES

Pressurized optical path to avoid optics contamination, Laser source power meter, High efficiency fumes and dust extraction, 2D code and fiducial recognition

LASER DESCRIPTION

Laser power max	Up to 20W (XV) - 15W (UV) - 100W (CO ₂)
Smallest Spot Thickness	32 µm (XV) - 20 µm (UV) - 100 µm (CO ₂)
Board thickness	Up to 1,6 mm

UPGRADES AND OPTIONS

- 2D code and fiducial recognition
- Bottom side reader
- In focus belt conveyor
- Double belt

UPGRADES AND OPTIONS

- Flip unit
- Exhauster
- DB connection
- Marking libraries

The specifications given in this document represent the state of engineering at the time of publishing. Osai reserves the right to make modifications on the specifications and materials.